

U.S. Army Public Health Center

Army Influenza Activity Report

Week ending 16 November 2019 (week 46)

Influenza Vaccination Coverage*

As of 20 November 2019

N/A	DoD
49%	Army Active Duty
47%	Army Guard
58%	Army Reserve

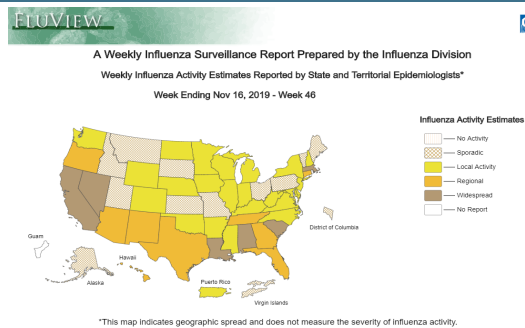
*Data Source: MEDPROS, ASIMS, MRRS

SUMMARY

The proportion of positive influenza A specimens for the Army in week 46 is 1.6%, which is lower than the historical average of 4.8% for the same time. All regional health commands (RHC) had a percent positive rate lower than their respective historical average. Non-active duty (AD) individuals accounted for 88% of influenza A specimens in week 46, and RHC-A accounted for 56% of influenza A specimens. There were no hospitalizations reported in week 46; the season total remains at nine. The majority of positive respiratory illness specimens were in younger populations; those under 18 years of age accounted for 78% overall of positive respiratory illness specimens in week 46. In AD Soldiers, 18 to 29 year-olds accounted for 52% of positive specimens. Influenza B was the most common type of positive specimen, accounting for 55% of total positive specimens.

GEOGRAPHIC SPREAD

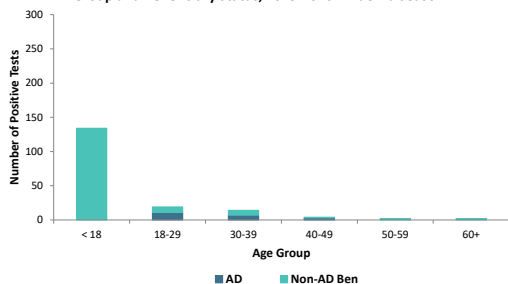
Click to enlarge image



In week 46, widespread influenza activity was reported in six states; regional activity was reported in nine states; local activity was reported in Puerto Rico 23 states. Sporadic activity was reported in the District of Columbia, U.S. Virgin Islands, and 11 states. Rhode Island reported no activity, and Guam did not report.

DEMOGRAPHICS

Positive Respiratory Specimen Results from Army MTFs by Age Group and Beneficiary Status, 2019-2020 Influenza Season

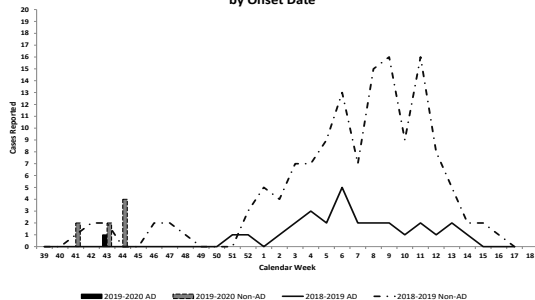


AD: A total of 21 positive respiratory specimens were collected from Active Duty (AD) Soldiers in week 46; 52% (n=11) were from Soldiers 18 to 29 years of age; 33% (n=2) were from soldier 30 to 39 years of age; 14% were collected from soldiers 40 to 49 years of age.

Non-AD: A total of 154 positive respiratory specimens were collected from non-AD individuals; 77% (n=154) were from those under 18 years of age.

INFLUENZA-ASSOCIATED HOSPITALIZATIONS

Army Influenza-Associated Hospitalizations Reported in DRSi by Onset Date



In week 46, there were no hospitalizations reported to DRSi. The season total remains at nine. During the 2018-2019 season, two hospitalizations were reported in week 46, and seven hospitalizations had been reported since the start of the season to week 46.

*DRSi does not capture cases older than 65 years old for influenza-associated hospitalizations.

Additional Resources: [Army Influenza Reports](#); [ARD Reports](#); [AFHSC Influenza Reports](#); [NHRC FRI Reports](#); [DoD Pandemic Influenza Watchboard](#); [CDC](#)

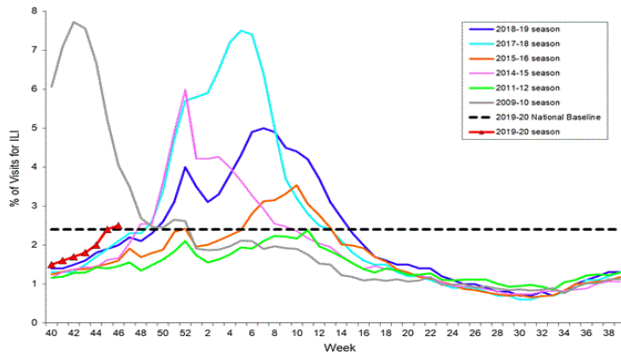
Key: ILI-Influenza-Like Illness; DRSi- Disease Reporting System Internet; NHRC- Naval Health Research Center; ADV-Adenovirus; RSV-Respiratory Syncytial Virus; DED- Disease Epidemiology Division; SM-Service Member; MEDPROS- Medical Protection System; ASIMS- Aeromedical Services Information Management System; MRRS- Medical Readiness Reporting System

Questions?
[Email APHC DEP](#)
410-436-7605

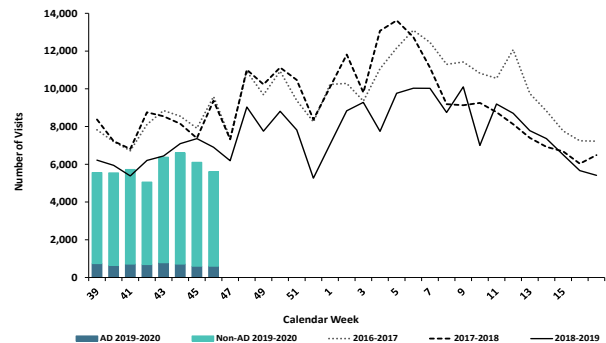
ILI ACTIVITY - UNITED STATES

ILI ACTIVITY - ARMY

Percentage of Visits for Influenza-like Illness (ILI) Reported by the U.S. Outpatient Influenza-like Illness Surveillance Network (ILINet), Weekly National Summary, 2019-2020 and Selected Previous Seasons



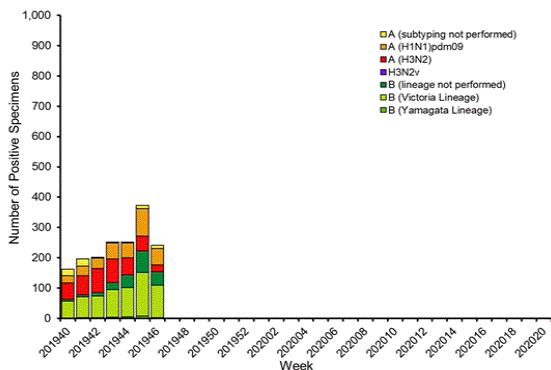
ESSENCE Weekly Outpatient Clinic Visits for Influenza-like Illness Army MTFs, All Services, 2016-2019



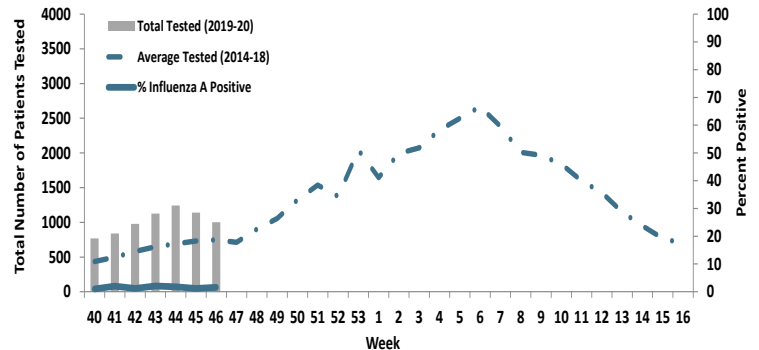
Nationwide in week 46, incident ILI activity was 2.5%; this is above the national baseline of 2.4%. Regionally, the percentage of ILI outpatient visits reported to the CDC ranged from 1.4% to 4.4%. At Army medical treatment facilities, incident ILI activity decreased from week 45 to week 46 by 8%. ILI activity was 19% lower compared to the same week last season.

LABORATORY RESPIRATORY SPECIMEN TESTING

Influenza Positive Tests Reported to CDC by U.S. Public Health Laboratories, National Summary, 2019-2020 Season



Proportion of Positive Influenza A Specimens for U.S. Army 2019-2020



Nationwide, 799 specimens were tested and submitted to CDC, of which 241 (30%) were positive. Influenza A accounted for 36% of the total positive specimens submitted to the CDC in week 46. In the Army population, 1.6% of 1,002 specimens tested for influenza A were positive. Fourteen (88%) of the positive influenza A specimens were from non-Active Duty individuals. RHC-A reported the majority (56%, n=9) of positive influenza A specimens.

		Week 43	Week 44	Week 45	Week 46	Season Total
Test Types Among Positive Influenza A Specimens	RAT	16	16	14	14	89
	Culture	3	0	1	2	9
	PCR	5	9	3	0	23
		Week 43	Week 44	Week 45	Week 46	Season Total
Army MTF Laboratory Results, 2019-20	Influenza A	24	25	18	16	121
	Influenza B	19	113	178	97	448
	Adenovirus	9	10	16	4	60
	Enterovirus	0	0	1	0	5
	Parainfluenza	20	11	13	7	66
	RSV	36	46	59	51	200
	Negative	2411	2782	2647	2157	15883
Total	2519	2987	2932	2332	16783	

Of the 2,332 specimens tested in week 46, 7.5% (n=175) were positive for any type of respiratory illness, which represents a 39% decrease from the 285 positive specimens in week 45. The most common type of positive specimen in week 46 was influenza B, which accounted for 55.4% (n=97) of positive specimens, a 46% decrease from week 45. RSV was the second most common positive specimen in week 46, accounting for 29.1%; this was followed by influenza A (9.1%), parainfluenza (4%), and adenovirus (2.3%).

Locations providing week 46 laboratory data as of 20 November 2019: Ft Benning, Ft Bliss, Ft Bragg, Ft Campbell, Ft Carson, Ft Drum, Ft Eustis, Ft Gordon, Ft Hood, Ft Huachuca, Ft Irwin, Ft Jackson, Ft Knox, Ft Leavenworth, Ft Lee, Ft Leonard Wood, Ft Meade, Ft Polk, Ft Riley, Ft Rucker, Ft Sam Houston, Ft Stewart, Ft. Wainwright, Korea, Landstuhl, Redstone Arsenal, Tripler, West Point, and Walter Reed.

*NOTE: Madigan AMC data was not received due to the switch from AHLTA/CHCS to MHS Genesis

LABORATORY RESPIRATORY SPECIMEN TESTING

Region	Installation	Influenza A			Influenza B			Adenovirus		
		No. Tested	% Positive	Baseline % Positive	No. Tested	% Positive	Baseline % Positive	No. Tested	% Positive	Baseline % Positive
RHCA	Ft. Belvoir	4	0	0			0	1	100	8.9
	Ft. Benning	121	0	1.4	121	3.3	0			
	Ft. Bragg	66	6.1	1.9			100			
	Ft. Campbell	72	0	0	72	1.4	0			100
	Ft. Drum	7	0	0						
	Ft. Eustis	22	13.6	20	1	100	100			
	Ft. Gordon	76	0	0	75	2.7	0	1	100	100
	Ft. Jackson			0			0			
	Ft. Knox	3	33.3	0	3	0	0			
	Ft. Lee	11	9.1	0						
	Ft. Meade	7	0	0						
	Ft. Rucker	24	0	0	24	12.5	0			
	Ft. Sam Houston			1.1			1.1			100
	Ft. Stewart	47	0	0	47	0	0			
Redstone Arsenal	13	0	0	13	15.4	0				
West Point Military Academy			0			0			100	
RHCC	Ft. Bliss	125	0	3.4	119	2.5	0	11	9.1	0
	Ft. Carson	47	4.3	8.1			100			
	Ft. Hood	271	1.1	2.4	271	28.8	0.8	1	0	0
	Ft. Huachuca	3	0	0	3	0	0			
	Ft. Irwin			0			0			
	Ft. Leavenworth	14	0	9.1	14	0	0			
	Ft. Leonard Wood	11	0	0	11	0	0			
	Ft. Polk	43	0	0	2	100	100			
	Ft. Riley	61	0	0	61	0	0			
Ft. Sill			0							
RHCE	Landstuhl Regional Medical Center	13	0	4.3	13	0	0	13	0	4.8
RHCP	Ft. Wainwright	22	0	0	22	0	0			
	Korea	10	0	28.6	6	0	0	6	16.7	3.7
	Tripler Army Medical Center	53	3.8	0	39	2.6	0	38	0	0
Region	Installation	Enterovirus			Parainfluenza			RSV		
		No. Tested	% Positive	Baseline % Pos.	No. Tested	% Positive	Baseline % Pos.	No. Tested	% Positive	% Pos.
RHCA	Ft. Belvoir				1	100	13.5			11.4
	Ft. Campbell						100			100
	Ft. Drum									0
	Ft. Gordon				1	100	100			100
	Ft. Sam Houston						100			
	Ft. Stewart						100	24	37.5	15.8
	West Point Military Academy						100			100
RHCC	Ft. Bliss							119	9.2	0
	Ft. Carson							8	12.5	0
	Ft. Hood						25	84	22.6	27.1
	Ft. Leavenworth							1	0	16.7
	Ft. Polk							16	25	33.3
	Ft. Riley							35	14.3	0
Ft. Sill									0	
RHCE	Landstuhl Regional Medical Center				16	18.8	10.6	15	6.7	2.3
RHCP	Ft. Wainwright							22	0	38.3
	Korea			0	6	16.7	3.7	6	0	25
	Tripler Army Medical Center	38	0	0	39	2.6	0	1	100	100

No.: Number of specimens tested during MMWR week 46 2019.

% Pos.: Percentage of positive specimens reported during MMWR week 46, 2019.

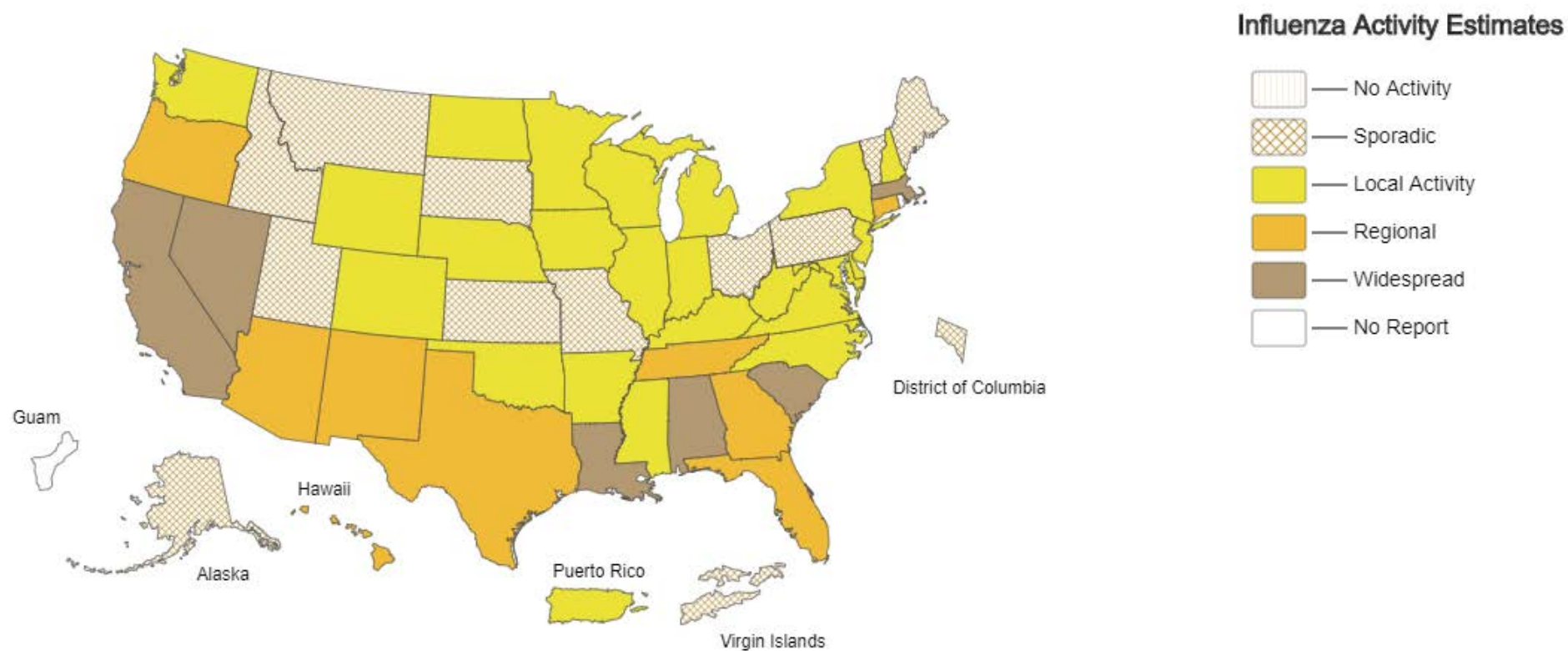
Baseline % Pos.: Percentage of positive specimens reported in MMWR week 1 during influenza seasons from September 2012 - May 2018.

Missing values indicate that specimens were not tested for the disease during the week of interest.

A Weekly Influenza Surveillance Report Prepared by the Influenza Division

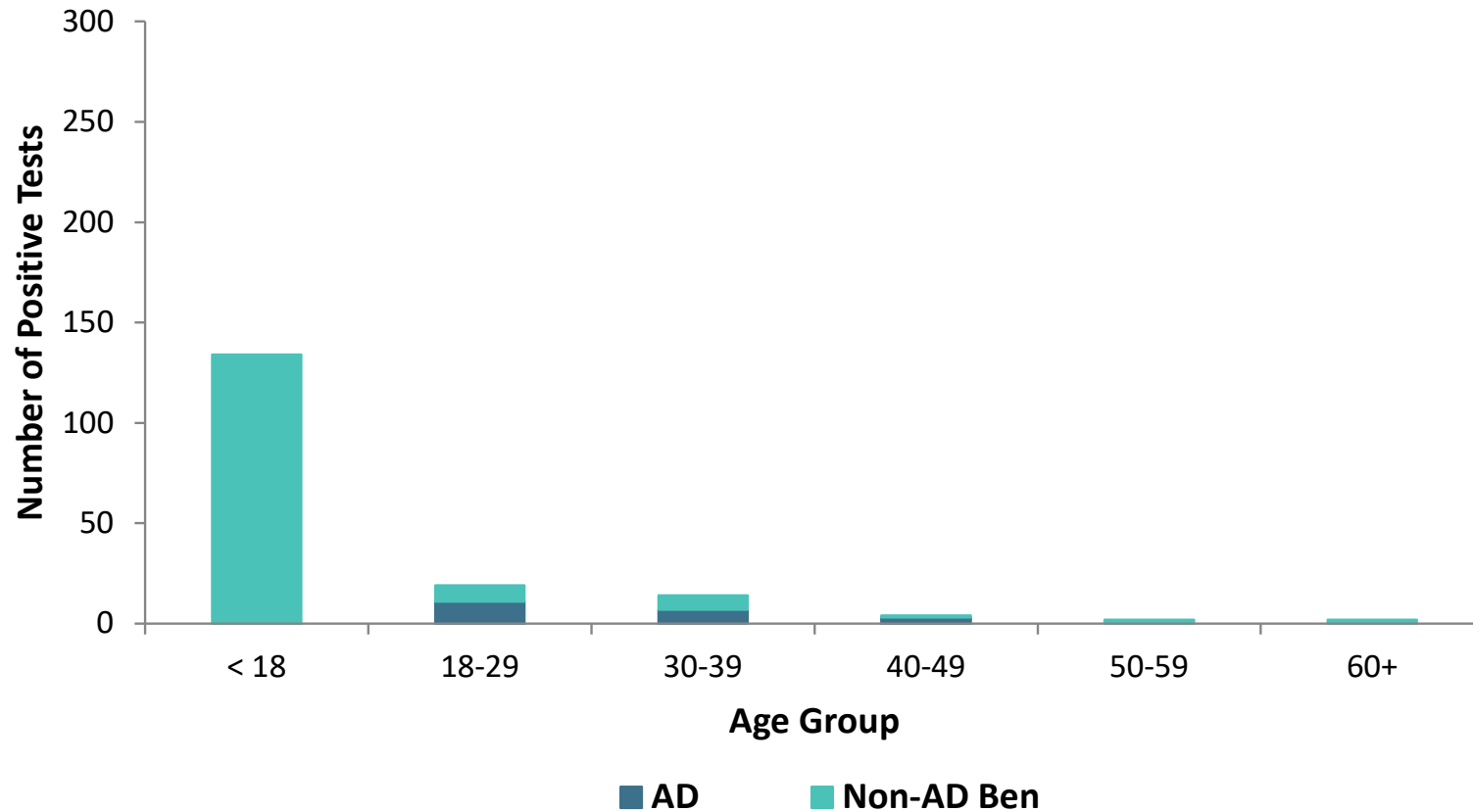
Weekly Influenza Activity Estimates Reported by State and Territorial Epidemiologists*

Week Ending Nov 16, 2019 - Week 46



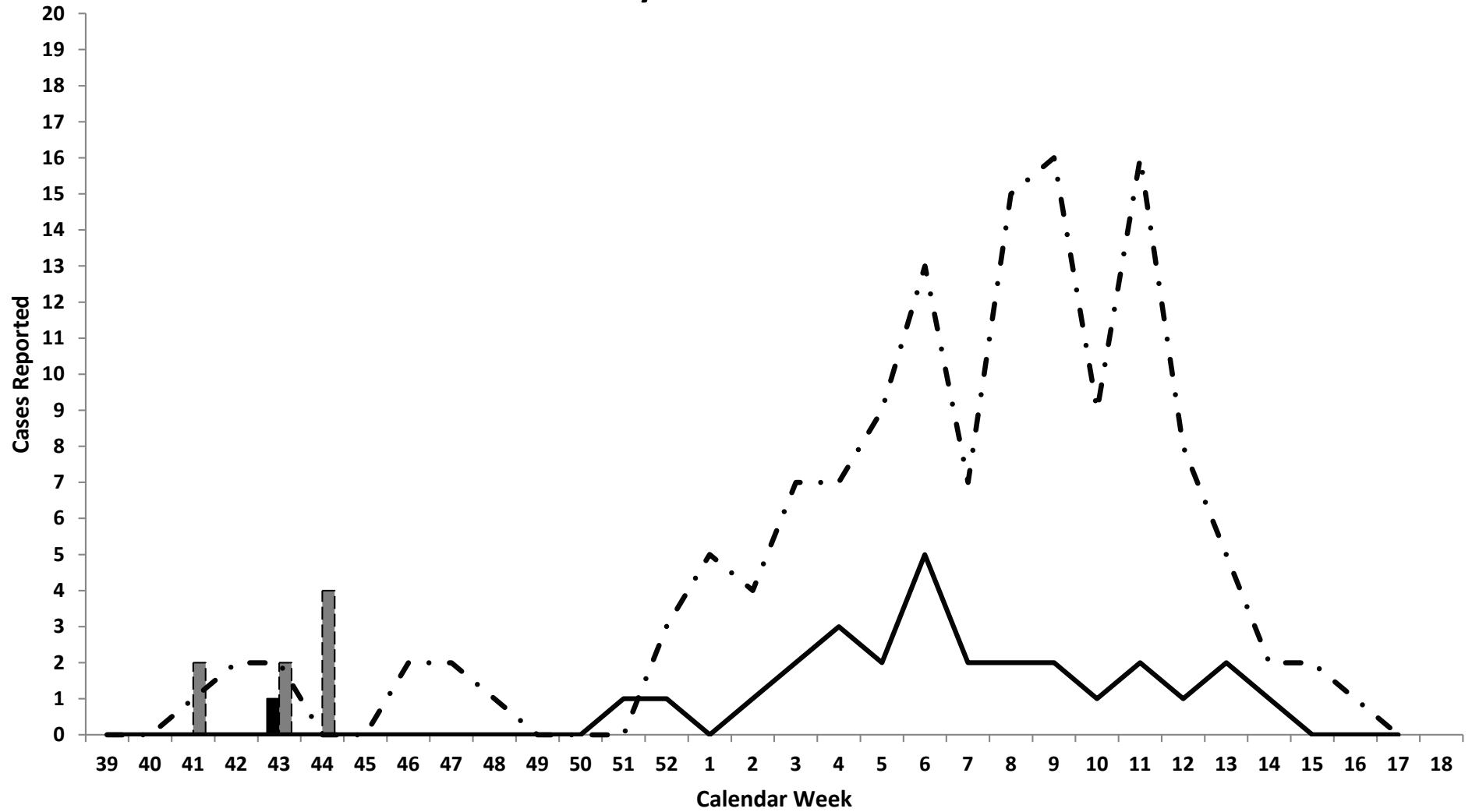
*This map indicates geographic spread and does not measure the severity of influenza activity.

Positive Respiratory Specimen Results from Army MTFs by Age Group and Beneficiary Status, 2019-2020 Influenza Season



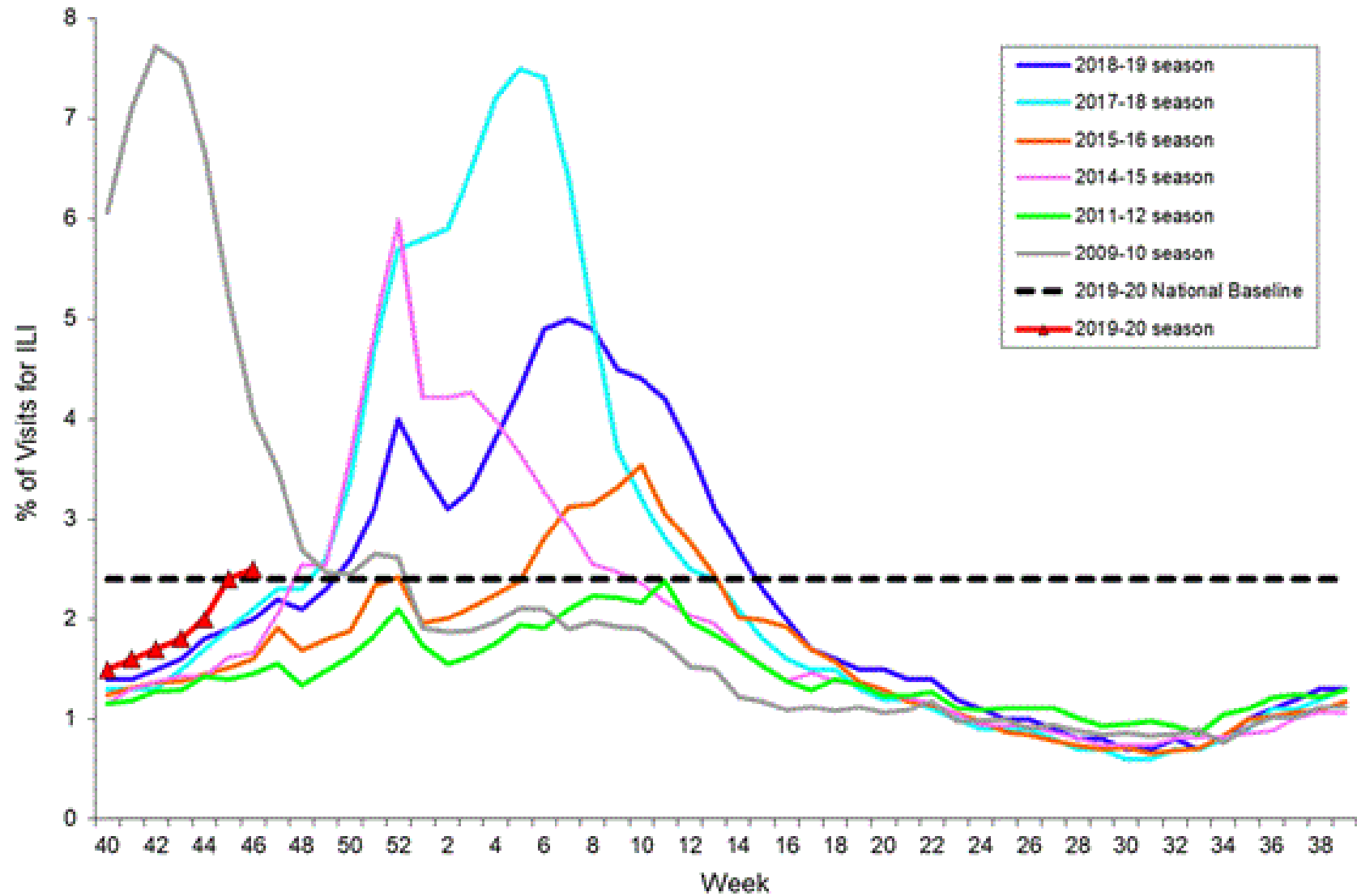
Week 46			
Age Group	AD	Non-AD Ben	Season Total
< 18	0	134	758
18-29	11	8	112
30-39	7	7	62
40-49	3	1	14
50-59	0	2	14
60+	0	2	17
Total	21	154	977

Army Influenza-Associated Hospitalizations Reported in DRSi by Onset Date



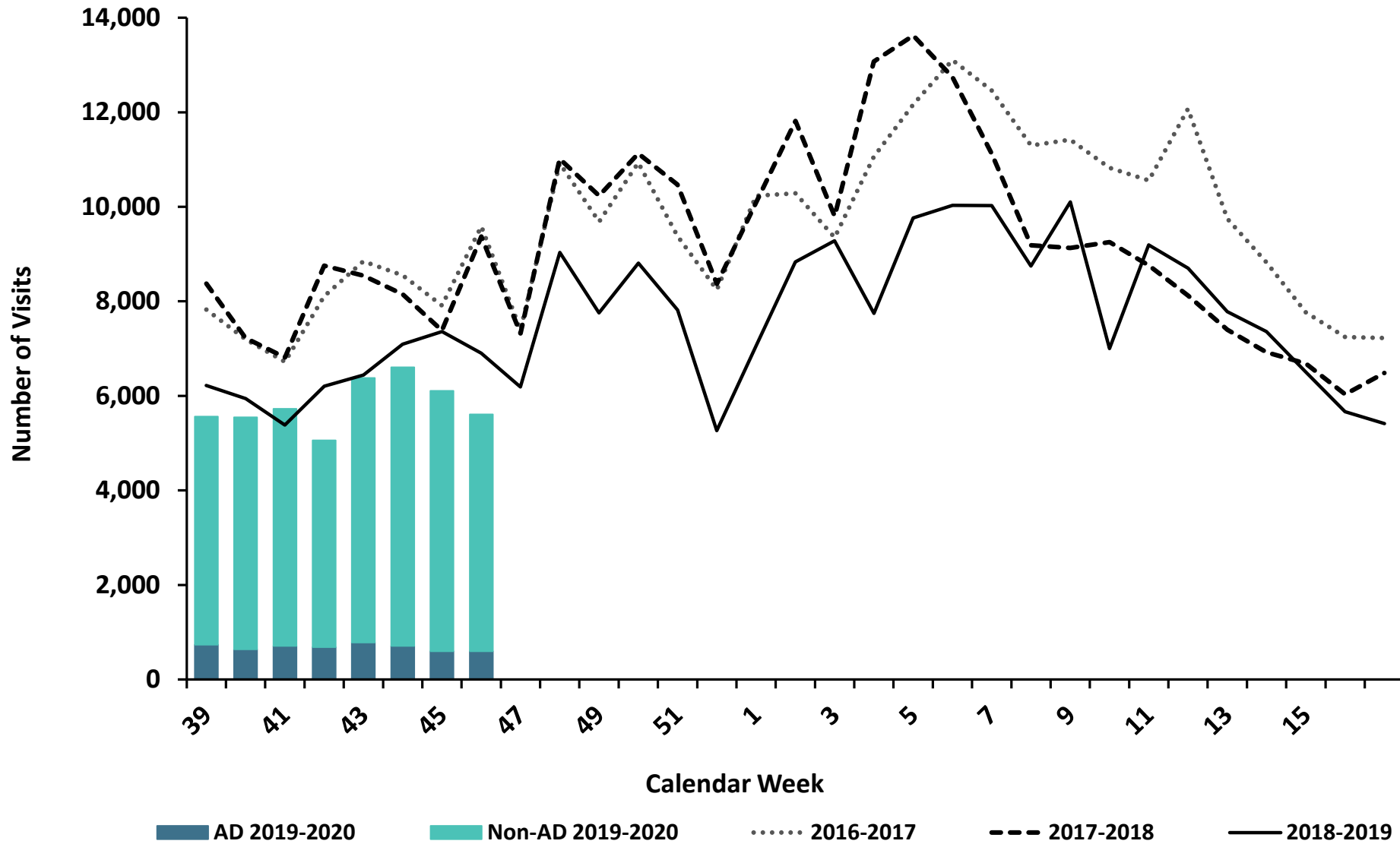
■ 2019-2020 AD ▨ 2019-2020 Non-AD — 2018-2019 AD - · · 2018-2019 Non-AD

Percentage of Visits for Influenza-like Illness (ILI) Reported by the U.S. Outpatient Influenza-like Illness Surveillance Network (ILINet), Weekly National Summary, 2019-2020 and Selected Previous Seasons

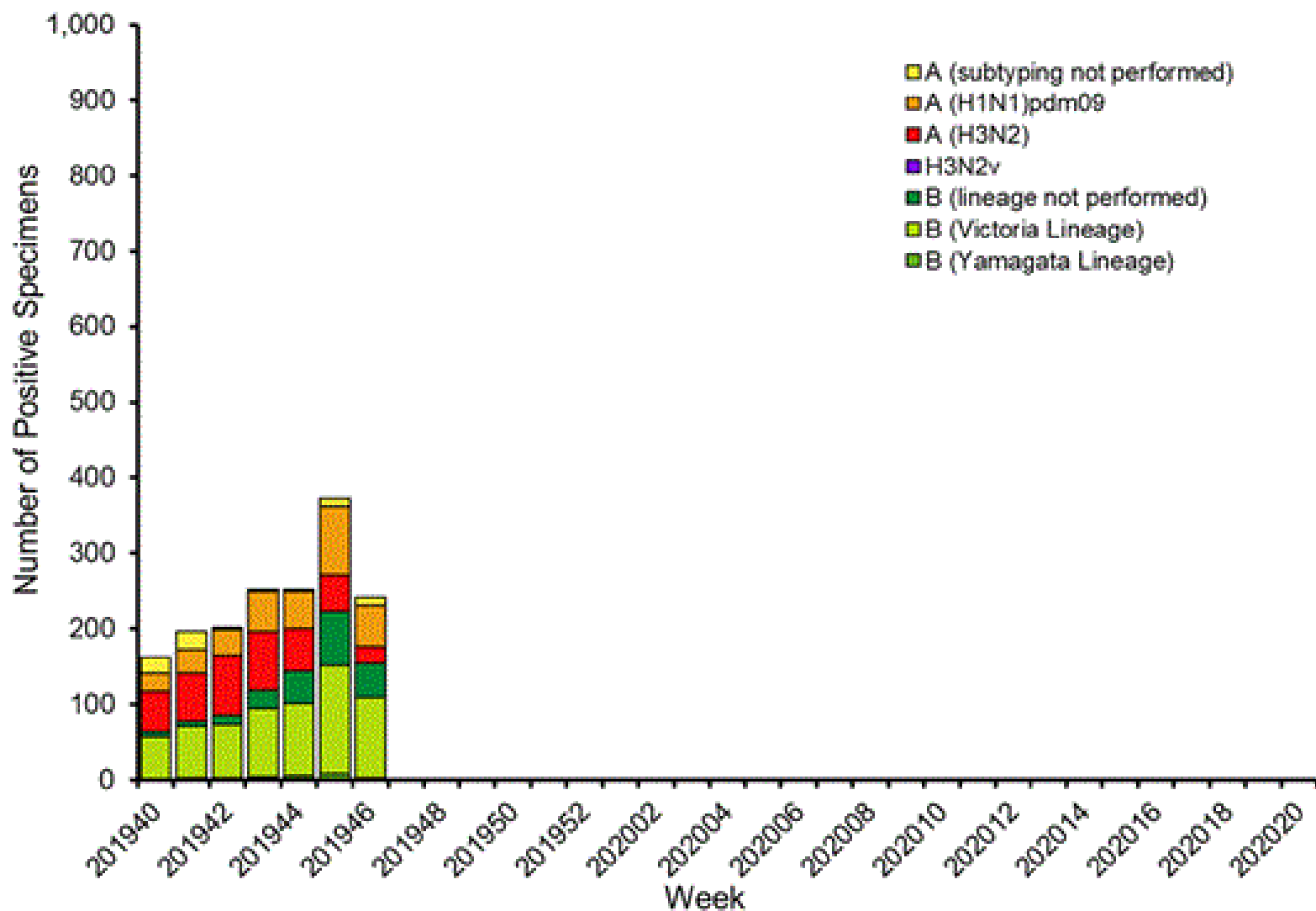


ESSENCE Weekly Outpatient Clinic Visits for Influenza-like Illness

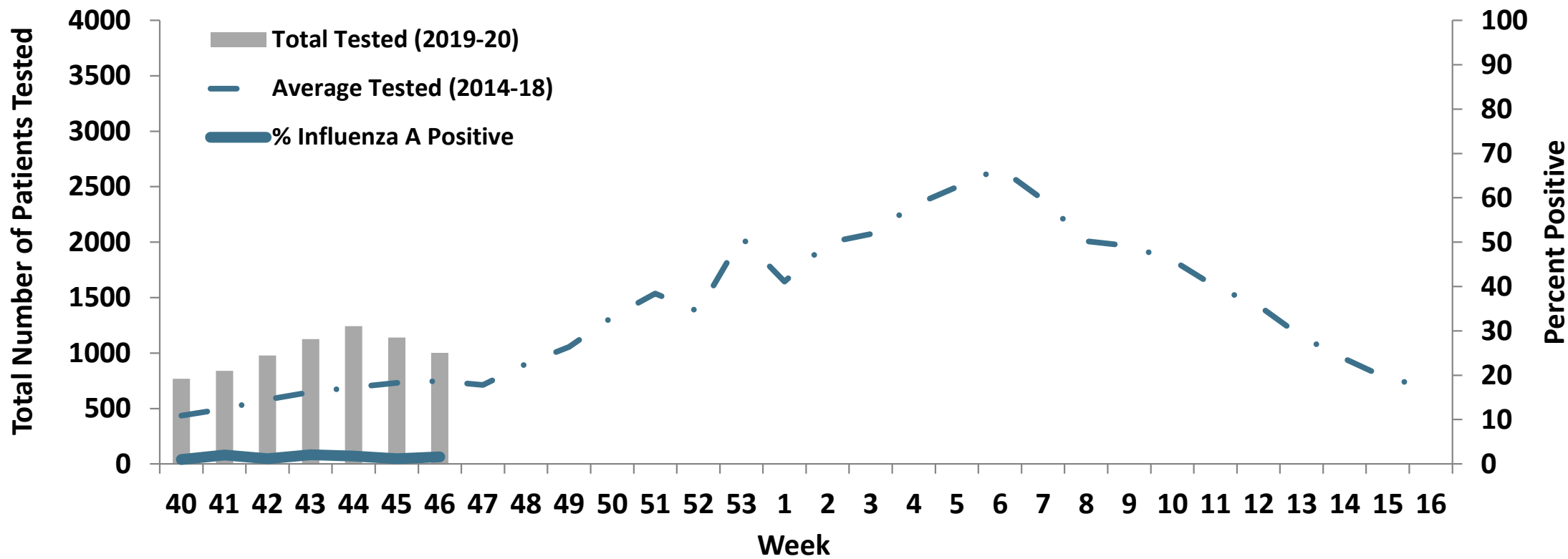
Army MTFs, All Services, 2016-2019



Influenza Positive Tests Reported to CDC by U.S. Public Health Laboratories, National Summary, 2019-2020 Season



Proportion of Positive Influenza A Specimens for U.S. Army 2019-2020



		Week 43	Week 44	Week 45	Week 46	Season Total
Test Types Among Positive Influenza A Specimens	RAT	16	16	14	14	89
	Culture	3	0	1	2	9
	PCR	5	9	3	0	23
		Week 43	Week 44	Week 45	Week 46	Season Total
Army MTF Laboratory Results, 2019-20	Influenza A	24	25	18	16	121
	Influenza B	19	113	178	97	448
	Adenovirus	9	10	16	4	60
	Enterovirus	0	0	1	0	5
	Parainfluenza	20	11	13	7	66
	RSV	36	46	59	51	200
	Negative	2411	2782	2647	2157	15883
	Total	2519	2987	2932	2332	16783

